

Delaware District

Newsletter



May 28, 2024

Volume 3, Issue 11



The Delaware District Office will be closed on Wednesday, June 5th thru Monday, June 10th to attend Annual Conference. I will be checking emails and phone calls, but they will be answered and returned on Tuesday, June 11th.

I will be at the Annual Conference registration/help desk starting Wednesday, June 6th @ 3:00 pm through Saturday, June 8th @ 1:00 pm. If you need assistance, please stop by to see me.

Calendar of Events

June 6—Bishop Easterling's Podcast

June 5—AA Summit

June 6-8—Annual Conference

*June 13—Barratt's Chapel Summer Worship service by Rev. Megan Shitama
Weston*

June 20—Barratt's Chapel Summer Worship service by Rev. Dale Brown

June 27—Barratt's Chapel Summer Worship service by Rev. Amy Yarnall

Rev. Dr. Tom Pasmore has been appointed as the Delaware District Superintendent

The Rev. Dr. Tom Pasmore has been appointed by Bishop LaTrelle Easterling to serve as the new superintendent of the Delaware District of The Peninsula-Delaware Annual Conference, beginning on July 1, 2024. In this pivotal role, Pasmore brings a wealth of experience, a deep commitment to community-based ministries, and a steadfast dedication to the Gospel.

"As we continue to emerge from the pandemic and find some sense of normality and stability," Pasmore said, "I'm hoping to continue to invite the district to be open and welcoming, as well as looking for ways to get outside of their buildings to do the work that we're called to in the community."

Bishop Easterling is excited to invite Rev. Pasmore to join the appointive cabinet. "Rev. Tom Pasmore is first and foremost a committed disciple of Jesus Christ. This profound grounding has led to fruitfulness in all his appointments. He also leads by example, including his participation in the leadership and development opportunities provided by the district and conference. Further, he has a heart for God's people and an unwavering love for The United Methodist Church," said Bishop LaTrelle Easterling. "As a leader, he is blessed with gifts of boldness, faithfulness, and innovation. He will carry these traits with him as the new superintendent of the Delaware District."



District Superintendent's Celebration

We wish to thank everyone who came out to the celebration we had for Rev. Archie last week. It was a great way to show Rev. Archie how much we appreciated all his guidance, wisdom and support over the past 8 years.

Special thanks to Rev. Vern Bryant, Yvonne Jackson and Paul Ford for helping me plan and making this event so special!

We will all miss you



Apportionments

We wish to thank the **8 Churches** who have paid both their Conference and District Apportionments in full for the entire year. There are **44 Churches** who have paid their District Apportionments in full for the entire year and we thank you as well.

We are in the 2nd quarter of the year, if your Church has not started making payments towards their District or Conference Apportionments, please start making payments so you don't have a large amount to pay at the end of the year.

Rev. Archie suggests churches split their Apportionment amounts into 11 payments, so they are not worried about final payments at the end of the year. All payments should be sent to the Conference Office at 139 N. State St., Dover, DE 19901. Payments should NOT be mailed to the District Office.

Thank you! Thank you! Thank you!



Bishop LaTrelle Easterling continues her podcast, **Thursdays at the Table** .

Asking good questions, engaging in deep conversation and telling the whole truth can change the world.

In her podcast Bishop LaTrelle Easterling invites you to join her for Thursdays at the Table as she is joined by leaders from across the connection, serving up new insights and interesting ways of experiencing our lives together.

New podcasts are the first Thursday of each month. Tune in **June 6, 2024** for the next podcast.

You can join at 8 a.m. or listen any time on: Spotify, Apple Podcasts or at pdcbbc.org/thursdays-at-the-table.html



The Bulletin

A monthly newsletter is published by Bishop LaTrelle Easterling and is a reproducible resource for local churches. You can view The Bulletin at: www.pdcbbc.org/the-bulletin

Peninsula-Delaware & Baltimore Washington Conferences

Check out our affiliation website: <https://www.pdcbbc.org> Under the leadership of Bishop LaTrelle Easterling, the affiliation is a unique partnership, which connects the leaders and members of more than 1,000 churches to share resources and create vital congregations that make disciples of Jesus Christ for the transformation of the world.



This year we will gather at the **Ashore Resort & Beach Club, 10100 Coastal Hwy, Ocean City, MD 21842** for the **240th Session of the Peninsula-Delaware Annual Conference**, from Thursday, June 6th, through Saturday, June 8th. Bishop LaTrelle Easterling, our Episcopal Leader, will preside over our Conference.

- **REGISTRATION is now closed.**
- **NO WALK-IN or ONSITE REGISTRATION PERMITTED.**

For more complete details go visit the Conference website, (pen-del.org) and click on the **2024 Annual Conference** tab at the top of the page or go to: <https://www.pen-del.org/2024-annual-conference>

Some portions of Annual Conference will be livestreamed on the Conference website (pen-del.org).

Appeals Calendar Peninsula-Delaware Annual Conference

Dear Leader: To help you plan out your Giving Calendar, this provides a list of dates for both the United Methodist Appeals and the Conference Appeals. We encourage you and your mission committee to plan your support for which of these you will support and how you will support them. Special offerings on these Sundays, and/or designating a budgeted amount for these, or other methods are encouraged. If you would like training or a speaker, please contact either Pastor Amy or Kevin (see below).

Date	Appeal	Information
1/14/24 1/14/25	Human Relations Day (Sunday before MLK Day)	This Appeal supports the UMC's Community Developers Program, Voluntary Services Program, and Youth Offender Rehabilitation Program. https://www.umc.org/en/content/human-relations-day-sunday-ministry-article
3/10/24 3/30/25	UMCOR Sunday (formerly called One Great Hour of Sharing) Lent 4	When a catastrophe occurs, your offerings enable the United Methodist Committee on Relief (UMCOR) to reach out and ease the pain and suffering by providing humanitarian aid of food, shelter, health and peace. https://www.umc.org/en/content/umcor-sunday-ministry-article
3/17/24 3/9/25	PLRCA	Partners of Leadership Resources for Churches in Africa. Contact Rev. Labala at jsei@dimdigital.com
4/14/24 5/4/25	Native American Ministries Easter 3	Funds support urban missions with Native Americans and fund scholarships for Native American seminarians. 50% of the Appeal is used for these programs within our Annual Conference. https://www.umc.org/en/content/native-american-ministries-sunday-ministry-article
5/26/24 6/15/25	Peace With Justice First Sunday after Pentecost	Poverty and violence need not be a reality in the world today. This Appeal aims to witness to God's hope for a faithful, loving world. 50% of the Appeal is used for these programs within our Annual Conference. https://www.umc.org/en/content/peace-with-justice-sunday-ministry-article
6/1/24	AC Appeal Sunday	Receive offering for AC Appeal if not already provided for
6/624- 6/8/24	Annual Conference Appeal: You may bring funds to the Conference or remit directly to the Conference office.	Churches are encouraged to raise funds in advance and bring them to Conference. This year's appeal will support Board of Ordained Ministry Scholarships, the Central Congo Partnership, and the local offering will go to Salisbury Urban Ministries.
7/14/24 7/13/25	Deaf Awareness Sunday	Provides our churches a Sunday to uplift those with deafness or other hearing problems. Offerings will support the Deaf Ministries within the Annual Conference.
8/11/24 8/10/25	Camp Pecometh Sunday	This appeal provides fund for programs at and scholarships to Camp Pecometh. www.pecometh.org
9/8/24 9/14/25	PenDel Student Scholarship Sunday	This appeal directly benefits Pen-Del students attending college by providing scholarship funds. www.pen-del.org
10/6/24 10/5/25	World Communion First Sunday in October	Provides funds for racial & ethnic undergrad scholarships and advance-degree work related to the mission of the UMC. https://www.umc.org/en/content/world-communion-sunday-ministry-article
10/13/24 10/12/25	Disaster/VIM Sunday	Funds raised are used for disaster response within the AC and for VIM Team scholarships.
11/3/24 11/2/25	Africa University Sunday	Raising costs and a growing student body means every year more scholarships are needed at AU. Your gifts help grow the endowment fund that provides this assistance. A bulletin insert will be provided. www.africau.edu
11/24/24 11/30/25	Student Day Last Sunday of November	Provides loans and scholarships to students attending a UM Church affiliated college. Some of the funds are returned to the Annual Conference to award. https://www.umc.org/en/content/united-methodist-student-day-sunday-ministry-article

Questions? – contact Amy Yarnall at pastor.amy@wesleyumc-dover.com 302.354.2982

Or Kevin Goodwin @ MissionsCzar@aol.com or 302.453.1169

Barratt's Summer Worship Series 2024



Barratt's Chapel will again present its Summer 6-Week Worship Series on Thursday evenings at 7:00pm. A variety of Pastors, Churches and organizations will create different worship experiences and preaching. An offering will be collected to support the mission and ministry of Barratt's Chapel. Refreshments and fellowship will follow the service in the Vestry.

June 13 Camp Pecometh will start us off as they bring together campers and staff, past and present, in a service reminiscent of the camping experience. Rev. Megan Shitama-Weston, Ordained Deacon and Pecometh Program Director, will bring us the preaching word.

June 20 Rev. Dale Brown, Senior Pastor at Community United Methodist Church in Berlin, MD.

June 27 Rev. Amy Yarnall, currently serving Wesley United Methodist Church in Dover, DE.

July 4 No Service

July 11 Pastor Casey Houtz, serving Ewell-St. Paul's United Methodist Church in Clayton DE. He is in his 6th year of pastoral ministry after a career in broadcast.

July 18 Rev. Wendy Owens Butterworth, who serves Millville United Methodist Church in Millville DE.

July 25 Rev. Tom Pasmore, incoming Delaware District Superintendent. He has served in a number of appointments in Delaware and on Maryland's Eastern Shore.

6362 Bay Rd, Frederica, DE 19946

302-335-5544

CounterPoints in Stewardship

by C. David Buchanan

Subject: The Awesome Offering on Miracle Sunday

In the 1980's, church consultant Lyle Schaller noted that a number of churches were conducting what they called "Miracle Sunday." This program has been reported to raise as much as 100% of a church's income on one Sunday. My experience with it is that it has raised as much as 2/3 of a church's annual income on one day. Much has changed since that time, so I have made some adjustments in what I call "The Awesome Offering." The means of communications have changed significantly. Also, with automatic withdrawals, there is more flexibility to allow the offerings to be paid on a monthly basis. A defined amount of time for it to count as part of the Awesome Offering should be set in advance, preferably no more than two months.

Below is a summary of notes from Schaller's original article plus some additions from experiences and current fundraising practices.

Requirements: You need ...

Non-controversial cause e.g. overdue maintenance, mortgage, childcare, music, etc.
A congregation that wants to be responsible in ministry
Positive attitude, willing to ask people for money
Good pastoral and lay leadership
A Strategy
People of capacity to encourage others to give

The Advantages

It is specific and measurable
Achievable, unifying, and breeds confidence
Defined timeline with defined termination
Ministry is increased in quality and quantity, especially when combined with a "Mission Tour"

The program

Set date
Approve projects and amount to be raised
Set up campaign team
Create communication networks, using electronic and paper communications
Create paper information plan; letters, brochure, bulletin, etc.
Create electronic information through website, Facebook, and/or Twitter.
Ask people who have capability to make advanced pledge to give on Miracle Sunday.
Raise at least 1/2 of goal through a small number of major givers
Hold a special dinner at the half way point for the congregation, informing them about the projects, and the amount already committed.
Encourage 100% participation with a series of letters.
Receive "Awesome Offering" on Miracle Sunday.
Celebrate

If you can use this in your church, please feel free to do so. It can restore confidence when applied appropriately. For questions, please feel free to contact me.

CAUTION: Not recommended if you have done a capital campaign within the past five years.

Shalom,
Rev. Dr. C. David Buchanan
stewardrev@gmail.com

News from the CLM Corner

If

you are a member of the United Methodist Church..

you have taken the *Basic Lay Servant Course*

you serve in a leadership position in your church

you have taken advance course to become a

Certified Lay Servant

You feel the call to go further in ministry..

You read the book “Christian as Minister”

You discussed your call with your *SPRC & your Pastor*..

You have met with your District Superintendent (DS)

You are ready to take the 4 Module

Certified Lay Ministers Class (CLM)

Watch the newsletter for upcoming dates, time and location or contact Brenda Tildon.

*God is able to do immeasurably more than all we ask or imagine,
according to His power that is at work within us.*

Ephesians 3:30

Brenda Tildon at 302-530-6422

tildonbrenda@aol.com

Hello Sisters in Christ!

I would like to invite any interested women from your congregation or group to attend a presentation by Linda Willimer, the Delaware Affiliate Director of I Support The Girls. Some of you may have seen this organization highlighted on the Kelly Clarkson show this spring. The organization is dedicated to distributing bras, underwear, and menstrual products to women in need, especially those who are unsheltered.

Our St Mark's United Women in Faith group wants to spread the word and learn more about how we might support and get involved in this effort, as we suspect there may be a need in New Castle County as well. Currently, the Affiliate is based in Sussex County.

Our presentation will begin at 11 AM on Saturday June 8th in St Mark's UMC Fellowship Hall, 1700 Limestone Rd, Wilmington DE19804.

If you have interest in joining us for this event, please contact Carol Brown at umw@stmarksumcde.org or calling 302-584-1032.



President and Founder

Sharee Dorsett



REBUILDING LIVES, ONE WOMAN AT A TIME



A LIFE OF SERVICE

Jacqueline Swann

Jackie Swann dedicated her life to helping women elevate themselves in every way possible. She showed them a better way, not only by example, but by investing her time, love and financial resources. She took on a second job specifically to use those proceeds to assist women in need. Focusing her efforts on women caught up in the sex trade, who were fleeing abusive situations and felt they didn't have any other recourse.

She served as a spiritual mother to many of these women, guiding them in God's ways and emanating His love. Helping them to understand that they have value and a purpose. We decided to honor Jackie's lifelong service to empowering women by naming our first transitional home after her. Furthering her legacy of love and service.

Mission: Jackie's Home, a Heart for the City outreach, offers women a safe space to start anew through a long-term structured transitional process, guiding them from homelessness to self-sufficiency.

Tailoring support to each woman's unique needs, we aim to empower them with confidence while respecting their dignity.



2206-2200 N. Market St.
Wilmington, DE 19802
Phone: (302) 605-2303

Jackie's Home

Rebuilding lives, one woman at a time

At Jackie's Home, we take a holistic approach to helping women build their lives through programming that includes:

- Therapeutic and emotional support
 - Spiritual guidance
 - Self-sustainability
 - Continuing education assistance
 - Employment training and managing finances
 - Learning to live a healthy and balanced lifestyle
 - A wide array of service linkages
- ... and much more!

Our phased programming was created to serve women who are dedicated to owning their own journey. Being committed and accountable to accomplishing their personal program objectives.

We provide the space and support for our clients to reimagine, reinvent and restore themselves.

Why the Need is So Great

1 in 3 women experience emotional and/or physical abuse and trauma, some without means for housing.

Women make up 39% of the homeless population, placing them in extremely dangerous and vulnerable positions.

Individuals in this demographic are under employed and without resources, caught in the destructive loop of poverty.

Our program provides the restorative resources and skills to help women develop *themselves*, to build a healthy, successful future

The Jackie's Home Restorative Program Focuses on four pillars:



SPIRITUAL

Power and purpose of Faith Church
Community
Gift Discovery
Volunteering



FINANCIAL

Budgeting 101
Home Buying
Credit 101



MENTAL/ EMOTIONAL

Counseling Sessions
Identity/Purpose
Emotional healing
Healthy coping skills
Trauma



PHYSICAL

Tailored Workouts
Nutritional Health
Emotional Eating
Healthy Eating Made easy

You can support the women of Jackie's Home by becoming a monthly partner!

For more information including resident referrals and volunteer opportunities, please contact: Sharee Dorsett (302) 605-2303

The Delaware District of the Peninsula Delaware Conference

Committee on Urban Center Ministries

Request for Grant Proposals

MISSION of Committee: Supporting Urban Center churches in developing and executing intentional urban mission and church strategies that led to vital congregations and communities by funding programs, capital improvements, or recommending services.

VISION of Committee: Urban Center churches are vital, healthy, and fruitful congregations engaging with their thriving communities through urban ministry.

ELIGIBILITY: Applicants are limited to United Methodist Congregations, Organizations, and Nonprofit Agencies located and operating within the geographic boundaries of the City of Wilmington, Delaware..

We also encourage involvement in urban ministry by suburban UM congregations in partnership with urban UM churches and organizations. In cases where the ministry involves such a partnership, the grant money would be given to the urban church/organization. The program leadership can come from either or both groups in partnership. The planned leadership model must be clearly described in the grant request.

Grants will be accepted on a rolling basis.

For more detailed information and to fill out the application, go to the Conference website: Pen-del.org; click on Districts; click on Delaware; click on Urban Ministries. **The application is at the bottom of the page.**

For questions or assistance contact the Delaware District Office at:

delawaredistrictumc@gmail.com

COMMUNITY BINGO

FAMILY FUN FELLOWSHIP

Saturday, June 1, 2024
5:00 p.m.



Location:

**Nanticoke Indian Center
27073 John J Williams Hwy.
Millsboro, DE 19966**



Sponsored By:

Indian Mission United Methodist Church, Inc.



This is a free community event for all ages. Everyone is welcome!

Prizes will be various gifts.

For more information call: 945-0830 or 934-7779

Millville United Methodist Church

Summer Sales Event Schedule

Our Annual Yard Sale

Friday, June 14 @ 6 – 8:00 pm

Saturday, June 15 @ 8 – 1:00 pm

Saturday, June 22 @ 8 – noon (1/2 price sale)

More Bake Sales

Saturday, June 29 @ 8:00 am to *10:30ish

Saturday, July 27 @ 8:00 am to *10:30ish

Saturday, August 31 @ 8:00 am to *10:30ish

*Closing time may vary



*Millville United Methodist Church
36405 Club House Rd.
Millville, DE 19967*

A white rectangular sign with a thin black border and four gold-colored fasteners at the corners. The sign features the words "FLEA MARKET" in a bold, red, sans-serif font. The letters have a slight 3D effect with a thin black outline. The sign is centered and surrounded by a string of colorful triangular bunting flags in shades of yellow, teal, green, blue, purple, and pink.

FLEA MARKET

**Salem United Methodist Church
469 Salem Church Road
Newark DE 19702**

Saturday, June 15th, 9 am - 2 pm

Reserve a \$20.00 space by calling

Sue at 302-737-0220



MEN'S HEALTH SYMPOSIUM

**Ezion Mount Carmel United
Methodist Church**

800 N. Walnut Street
Wilmington, Delaware 19801

Saturday, June 22, 2024

10:00am - 12:00 pm

June is Men's Health Awareness Month

Panel of Career Leading Doctors discussing
**Prostate Cancer, Diabetes, High Blood
Pressure, and More**

GOSPEL CONCERT PRAISE WORSHIP CONCERT PRAYER

ISRAEL UNITED METHODIST CHURCH
20254 PLANTATION RD, LEWES, DE 19958
JUNE 30, 2024 AT 10:00 A.M.
PASTOR: REV. MARJORIE BELMONT



YOUNG ADULTS 53RD ANNIVERSARY CELEBRATION

We are pleased to invite you to our upcoming Praise and Worship Gospel Concert in celebration of our Israel UMC Young Adult's 53rd Anniversary.

Our theme is "Come and See What God Has Done." Psalm 66: 1-20. Our attire colors are Fuchsia and Black.

Featuring the amazing "God's Travelers" from several area churches, rendering some of the best gospel music you have ever heard. Come join us and receive your blessing.

Join via Zoom:

<https://zoom.us/j/4792469249?pwd=NkdqanlIN0NMUjczckNiR0E0VFBCZz09>

Passcode 4792469249

Password: Israel

Dial: 1-305-224-1968



FREE WILL LOVE OFFERING CAN BE PLACED IN THE BACK DOOR BASKET. YOUR LOVE OFFERING WILL GREATLY SUPPORT OUR YOUNG ADULT'S CHURCH MISSIONS.

JOIN
CENTENNIAL UMC
ON A

Summer Outing

Fun
&
Fellowship



SIGHT & SOUND DANIEL

Lancaster, PA

THURSDAY

AUGUST 1st, 2024

Time: 7:30AM



Ticket: \$160.00

Included: Motorcoach transportation, show ticket, and an all you eat buffet meal

*Bus will depart from
44 E. Mt. Vernon St.
Smyrna, DE 19977*

Tickets given when paid in full.

*Make checks payable to
Centennial UMC
or use the QR code (+fees)*



Look for
Sight
and
Sound

For tickets & information

Sis. Elaine Perkins

347-454-1072

Sis. Truee Dorsey

302-561-0519

Don't delay.

*Get your
ticket today*

Payment plan available

\$60 due now

\$50 due March 1st, 2024

\$50 due May 1st, 2024

Shari Morrow, Pastor

Wyoming Peach Fest's annual

INDOOR Yard Sale ...

Saturday,

August 3 - 8 to 1...

@ Wyoming Church !

216 Wyoming Mill Road, Dover

Selling food from the grill -

Extra 'cool' bonus -
the Wyoming Church
youth will
sell their
fresh and
juicy
**PEACH
FUZZIES,**
raising funds
for their
2025 mission trip.



CITY OF LOVE CHURCH COMMUNITY GARDEN

226 North Walnut Street
Wilmington, DE 19801

fun
games

giveaways

door
prizes



Indoor Plant Workshop

Saturday, April 13th
2:30–4:30 P.M.

- Discover all the dos and don'ts of indoor plant care!
- **FREE** indoor plant!



Gardening Workshop

Saturday, May 18th
2:30–3:00 P.M.

- Interested in starting a vegetable garden right in your backyard?
- **FREE** vegetable seeds to get you started!

Harvest Fest

Saturday, August 3rd
2:30 P.M.

- Celebrate our first growing season at this community gathering!
- Food trucks, music, vendors and more!

VOLUNTEER DAYS

Want to get involved in the community?

Tuesdays ♥ 12:00–4:00 P.M.

March 5 & 12
April 2, 9 & 16
May 7



Sign-up to volunteer here.



The Sailor's Bible

Words by Tom S. Long Music by Allen Pote



Registrations Open!

Rising 1st-8th Graders

THE MUSIC FACTORY



Music Factory '24

August 5-9 & 11

The Sailor's Bible

register
here

This children's musical by Allen Pote and Tom S. Long includes three Bible stories: Noah and the Great Flood, Jonah and the Great Fish, and Paul's Shipwreck. Each story features the ocean as a symbol for the chaos of life and shows how only the power of God is greater than the natural forces of wind and wave.

more info: [facebook.com/numcmusicfactory/](https://www.facebook.com/numcmusicfactory/)

Music Factory is a week-long music/drama camp at Newark United Methodist Church.

Grades 1-3 9 am to noon \$80/week*

Grades 4-8 9 to 3 pm \$150/week*

*scholarships are available

email Lisa Santare at lsantare@newark-umc.org

Music Factory is open to the community, so invite your family and friends to join us.

Grades 1-3 (as of fall, 2024) 9:00 a.m.—12:00 noon/Fee: \$80

- Learn singing skills/songs
- Play/learn about musical instruments
- Explore creative drama
- Have fun making crafts and playing games
- Present songs at Sunday worship service

Grades 4-8 (as of fall, 2024) 9:00 a.m.—3:00 p.m./Fee: \$150

(unchanged voices only!)

- Create a full musical performance to present in Sunday worship
- Learn songs, staging, and movement
- Experience Bible stories through music and drama
- Make life-long friends
- Chorus, solo, and speaking roles available (everyone sings in the chorus)



The Delmarva Shorebirds

Faith and Family Night,

Friday August 16 @ 7:05 PM

featuring fireworks, and a testimony from former Orioles pitcher Scotty MacGregor.

Felton Viola UMC has a reservation in the Executive Club at Shorebirds Stadium. This area is elevator accessible, air conditioned, and includes inside and (cushioned) outside seating. The club is on the 3rd floor on the 1st base side.

Ticket price includes a 2-hour buffet, and is **\$40.00 /** person. We have 15 spaces still available.

If you'd like to join us yourself, or with your family and friends, email Pastor Christine at pastor.feltonviola@gmail.com.

Include your name, contact information, and the number of tickets that you'd like.

**South Wilmington Adult Senior Program
Is Sponsoring a Bus Trip to See
DANIEL
at
Sight & Sound**

October 30, 2024

Ticket includes Theater, Transportation and Dinner at Shady Maple

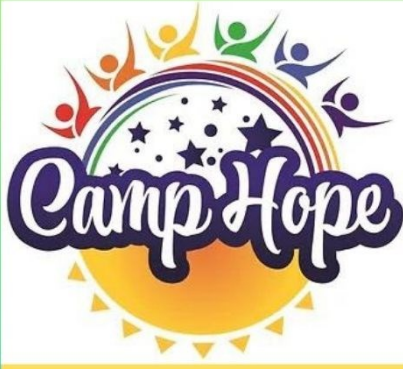
**\$55.00 (non-refundable) Deposit will hold your seat(s)
Due by May 30, 2024**

Second payment due June 28, 24 in the amount of \$55.00

Final payment due July 31, 24 in the amount of \$55.00

**Contact Vera Rider at 302-574-0074 or Cynthia Righter at 302-563-3743
for more information**





NOW HIRING!

SUMMER CAMP TEAM MEMBERS

We are looking for positive, enthusiastic, Christian
SUMMER CAMP COUNSELORS & A KITCHEN/FOOD MANAGER

Camp Hope is located at Conley's United Methodist Church
33106 Jolyns Way, Lewes, DE 19958

SUMMER CAMP COUNSELORS POSITIONS

- *Camp Counselor (Must be 25+ years old)*
- *Assistant Camp Counselor (Must be 18+ years old)*



DETAILS TO KNOW!

- *Camp Hope is an 8 week summer, day camp for children going into 2nd - 5th grade.*
- *Positions are part-time: Monday, Tuesday and Thursday from 8:30am -3:30pm.*
- *Camp Hope meets every Monday, Tuesday and Thursday beginning June 17th and concluding August 8th. Monday and Tuesday activities are held at Conley's United Methodist Church in Lewes, Delaware. Thursdays are Field Trips.*

FOR A COMPLETE JOB DESCRIPTION EMAIL Camphope316@gmail.com



APPLY NOW!

PLEASE CONTACT:

Karen Lessey, Camp Director 302-448-9924 Camphope316@gmail.com

Or mail your letter of interest and resume to:

*Camp Hope, c/o Conley's UMC, 33106 Jolyns Way, Lewes, DE 19958,
ATTN: Karen Lessey , Camp Director*

Questions? Please email Karen at Camphope316@gmail.com



LAY ACADEMY #SHIFT TRANSFORMATION:

The eDiscipleship Pathway in Leadership Training



Embracing a New Era:
#eDiscipleship at the Lay Academy

In an innovative shift, the Laity Peninsula Delaware Conference saw eight dedicated members embark on the first-ever eDiscipleship course at the Lay Academy. This milestone session marked a significant move towards integrating digital evangelism within the church's educational initiatives.

The introduction of eDiscipleship to the Lay Academy reflects a wider recognition: although the COVID-19 pandemic hastened the adoption of digital platforms within the church, there had been no formalized strategy for digital evangelism. This course is aimed to addressing that gap by equipping lay leaders with the necessary tools and knowledge to effectively leverage digital platforms for building faith-based communities and extending outreach.

The training began with an essential exploration of the varying generational demographics within the church, from the Silent Generation all the way to Generation Alpha. Understanding the distinct preferences and behaviors of these diverse age groups is crucial for creating digital content and engagement strategies that resonate across the entire spectrum. This segment emphasized the importance of using technology to connect rather than divide, meeting each generation where they are most accessible.

A particularly engaging portion of the course involved examining how the imagined technologies from the classic TV show "The Jetsons" have become realities by 2024. This not only made the training relatable but also sparked imaginative discussions on how these technologies can be applied in today's ministry contexts.

One notable technology, video calling, now pivotal in ministry, exemplifies how "The Jetsons" anticipated future communication tools. This technology has become a cornerstone for spiritual engagement and community building, enabling seamless connections across distances for virtual services, pastoral care, and more.



LAY ACADEMY PHOTO

However, this exploration also led to a critical examination of our current digital evangelism strategies. It raised important questions: Do we have a proactive digital evangelism plan, or are we simply reacting out of necessity? How effectively does our website engage with the congregation? Is the website the way to engage or is it just a billboard? What social media do we use? Are we utilizing modern communication methods like video texts to their full potential? Moreover, we discussed the importance of reaching out not just to our members but also to their families and friends, inviting them to experience our church's offerings, both in person and online. Have we invited the full membership list since we now offer services brick and mortar and online?

These reflections are inspired by Romans 12:2, which calls us to be transformed by the renewing of our minds, challenging us to rethink and rejuvenate our approach to ministry in this digital age. eDiscipleship course is just the beginning of a broader journey towards embracing and integrating cutting-edge technologies to enhance and expand our evangelistic efforts.

Have a question about eDiscipleship?

Feel free to send an email to help@travissmithsr.com.
Peninsula Delaware Communications Team Chair
Travis L Smith, Sr – eDiscipleship Visionary



Promoting prostate cancer awareness (DEProstateCancerCoalition.org)

*Ask about a prostate cancer screening, and you're asking for so much more.
If you're 40 or older, or have a family history of prostate cancer, get screened.*

HealthyDelaware.org/Prostate | 2-1-1



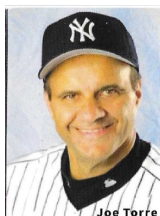
**HEALTHY
DELAWARE**



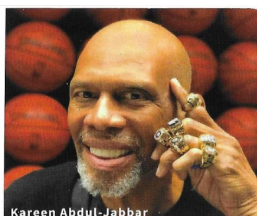
DELAWARE HEALTH AND SOCIAL SERVICES

Division of Public Health

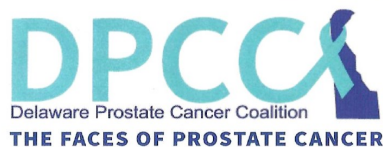
Cancer Prevention and Control Bureau



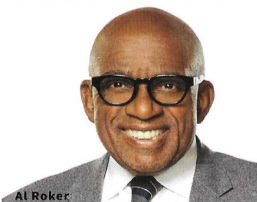
Joe Torre



Kareen Abdul-Jabbar



Dr. Dre Pinsky



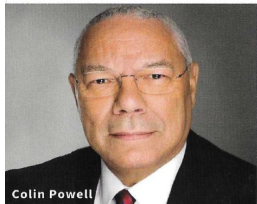
Al Roker



Rod Stewart



Ben Stiller



Colin Powell

For more information visit their website:

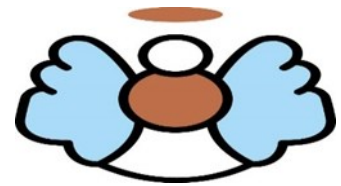
deprostatecancercoalition.org

Or contact **Dr. Michael Mulligan**

mmulliganatb@gmail.com

410-218-7018

ISRAEL U. M. CHURCH - MIRACLE ANGELS
20230 PLANTATION RD, LEWES, DE 19958
PASTOR: REV. MARJORIE BELMONT



MIRACLE ANGELS RAINBOW OF HOPE LUMINARY FUNDRAISER

Dear Fellow Sponsors, Family and Friends:

The Miracle Angels will be sponsoring a Cancer Mission fundraiser selling Luminary bags in honor of and or memory of cancer survivors for our sole support to Beebe Oncology Center, Lewes, DE, "Patient Special Needs Fund".

We will be having a "Rainbow of Hope Survivorship Worship Celebration" service for cancer survivors, caretakers, family and friends on Sunday, September 22nd at our church at 10:00 a.m.; wherein the luminary bags will be placed in the church sanctuary and lighted. Come, wear your survivorship ribbon color attire as we create a beautiful Rainbow of HOPE together!

The luminary bags will be on sale for \$10.00 per prior to the church worship celebration service at our 1 st Christmas in July Yard Sale on Saturday, July 6 th at the Rabbit's Ferry Community Center, 19112 Robinsonville RD, Lewes, DE 19958 – 8 a.m.- 2 p.m. You can purchase your bag at our yard sale and take home to decorate and place a name(s) on it and bring to the church service for placement or use the order form on the back with payment and we can place the names on it only for you. You may also keep the luminary bag and light it from your home if you choose to do so.

If you wish to support this fundraiser, please contact bjnscruisers@aol.com for an order form.

God Bless,





PECOMETH CAMP & RETREAT MINISTRIES



Summer Camp - June 17 thru August 23, 2024

<https://www.pecometh.org/summer-camp>



Single Parent Family Retreat - July 5-7, 2024

<https://www.pecometh.org/single-parent-family>



Pool Party - Saturday, June 22, 2024

<https://www.pecometh.org/summer-kick-off>



Friends and Family Camp - July 26-28, 2024

<https://www.pecometh.org/friends-and-family-camp>

Houston United Methodist Church is seeking a part-time piano/organ player. If you are interested or know someone who is, please contact Pastor Don Mulholland @ 302-249-0801 or email @ dmulholland73@hotmail.com

Houston UMC, 235 Broad St., Houston, DE 19954





Job Description /Position Title: Co-leader of Contemporary Worship and Music

Reports to: Pastor / SPRC

Status: Part-time, Nonexempt (10 to 15 hrs/wk for weeks when responsible for worship)

Contact: John Mosko jcmosko@gmail.com

Hockessin UMC—Job Summary

The Co-Leaders of Contemporary Music and Worship will be responsible for organizing and leading the contemporary music worship service each Sunday, including weekly rehearsals, and assistance in contemporary worship planning at **Hockessin United Methodist Church (HUMC)**. The individuals hired for this position will serve HUMC by building on our current team of volunteers to provide a praise-filled contemporary worship experience which engages with the congregation to the glory of God and Jesus. This is a team-based position in which two or more individuals will co-lead by alternating responsibility for leadership. Each co-leader will be scheduled in advance to be responsible for a week of musician coordination, practice, and leadership on Sunday. All co-leaders will work collaboratively on duties that build and develop the base of volunteer musicians.

Essential Job Duties:

- Collaborate with Contemporary Worship Coordinator and with other Co-Leaders to designate who will lead each week's contemporary worship and practices
- Collaborate with Pastor and Worship team to create a cohesive message and praise-filled experience for all congregation members from youth to elderly
- Plan and Coordinate with Pastor, audiovisual team, and Celebration Cluster including selection of songs based on weekly service themes
- Lead weeknight and Sunday morning rehearsals with musicians and vocalists
- Lead contemporary worship services to bridge between songs with scripture and prayer
- Select/create vocal/instrumental musical arrangements which engage the congregation
- Collaborate with existing HUMC contemporary musicians as well as recruit and develop new members for vocal and instrumental participation
- Hire guest instrumentalists, as needed, and within budget guidelines
- Coordinate and communicate rehearsal schedules, materials and other information to team members
- Prepare song texts for printed bulletin and projection and coordinate with office staff
- Maintain and further develop contemporary music library within copyright requirements
- Attend staff meetings, worship planning meetings, and other church meetings as appropriate

Qualifications Our ideal candidate:

- Is a Christian who loves Jesus and shares that love on a daily basis
- Has demonstrated success leading contemporary worship services as a participant in a contemporary Christian music ensemble
- Has demonstrated ability to set the spiritual tone for both rehearsals and worship
- Participates in the music with excellent musical skills, in particular strong piano/keyboard and/or guitar skills, with the ability to sing, play and lead from both standard notation and chord charts
- Inspires our amateur and youth musicians and vocalists to the glory of God
- Demonstrates good administrative, time management and communication skills
- Is proficient with audio systems and other relevant technology
- Has extensive knowledge of contemporary praise music repertoire including creed and prayer selections
- Degree in music desirable but not mandatory, depending upon skill and experience
- Must pass background check prior to selection

Compensation

- Co-leaders will be compensated on the basis of a fixed rate for each week of practice and worship that they lead
- Given the team-based approach, there is no vacation earned for this position

JOB POSTING

Job Title: Lower Shore District Administrative Assistant

Reports to: Lower Shore District Superintendent

Locations: Salisbury, MD

Classification: Part-time (24-26 hours per week)

Salary Range: \$19 - \$22 per hour

Posting Date: May, 2024

Position Objectives:

The District Administrator Assistant will support the District Superintendent and provide administrative oversight and support for district ministry that advances the Peninsula-Delaware Conference's mission of inspiring and equipping local faith communities to develop disciples of Jesus Christ for the transformation of the world.

Key Accountabilities :

- ◆ Facilitate interpretation of Pen-Del policies and procedures and communicate with pastors and churches so that issues and concerns are addressed immediately and appropriately, and pastors' and congregations' appreciation for the connection grows.
- ◆ Coordination of charge conference schedules and material for the district so that church conferences can occur in an efficient and timely manner.
- ◆ Perform final review of church conference forms and process compensation forms so that the Pen-Del database and other appropriate files can be accurate and current.
- ◆ Assist pastors and congregations in completing church and clergy profile information so that the superintendent is equipped to make recommendations and decisions regarding appointment-making.
- ◆ Disseminate information and respond to questions and concerns on mission-share payments, pension and medical arrearages, statistical reports, church fund balance reports, evaluations, clergy advisories, and church conference.
- ◆ Coordinate arrangements and prepare material for district meetings, training events, and workshops.
- ◆ Manage/maintain district budget and credit card records, including processing vouchers, expense reimbursements, and internal transfers.
- ◆ Prepare and send communications from conference and district through district newsletter and other electronic communications.
- ◆ Conduct trainings/workshops; including, administrator/secretary workshops and trainings for statistical reports, church conference and Pen-Del database.
- ◆ Manage the workflow of the change of appointment lifecycle. This includes scheduling take-ins, preparing folders, processing necessary paperwork and updating database.
- ◆ Complete Change of Appointment form within five business days of a change and forward to appropriate offices.
- ◆ Provide support for correspondence and calendar management to district superintendent.
- ◆ Provide trainings for the district.

continued on next page.....

Special Aspects of the Role:

- ◆ Confidentiality is mandatory.
- ◆ It is preferred that the jobholder be of the Christian faith, ideally of United Methodist denomination, and driven to be Christ-centered and Christ-like. In addition, the individual should be open to listening and learning from the faith experiences of others with different theological views.

The job will be based in the Lower Shore District Office, 517 Winder St., Salisbury, Maryland 21801. Requires some travel throughout the district/Pen-Del area.

- ◆ Manage flow of work throughout the year in preparation for seasonal work (church conference, change of appointments, evaluations, statistics, etc.).
- ◆ Ability to work as a member of a variety of teams at the same time.

Educational Attainment:

- ◆ Minimum High School Diploma, Bachelor's Degree or equivalent experience.

Work Experience:

- ◆ A minimum of two years of experience as an administrative assistant.

Skills & Knowledge:

- ◆ *Leadership*: motivates and influences people to achieve positive results, demonstrates a non-anxious presence, has the ability to disciple leaders, builds teams; mentors and coaches in a peer environment; thinks strategically; has the ability to interact with diverse groups of people and manage a variety of tasks.
- ◆ *Organization*: plans with the end result in focus, performs administrative tasks effectively and completes tasks on time; communicates professionally using written, oral, and digital media, demonstrates timely follow through, a problem solver.
- ◆ *Knowledge*: Possesses a working knowledge of the culture and structure of the UMC denomination and a working knowledge of Microsoft Office Suite.
- ◆ *Customer Service and Technical Competency*: Demonstrates the ability to work effectively to assist persons with various conference tools and processes including Arena, the Conference Web site and resources available through BWC.
- ◆ *Hospitality*: Welcome, orient, and assist visitors to the District Office.
- ◆ *Creativity*: Brings fresh ideas and approaches to the planning and execution of tasks and events.
- ◆

Application procedure:

To apply for this position, send a resume and cover letter outlining how you meet the specific requirements of the position to hr-benefitsoffice@BWCUMC.org as soon as possible. **Applications will be reviewed weekly until we identify the right candidate.**

While we sincerely appreciate all applications, only those candidates selected for interview will be contacted.

Peninsula Delaware Conference is committed to creating a diverse environment and is proud to be an equal opportunity employer. All qualified applicants will receive consideration for employment without regard to race, color, religion, gender, gender identity or expression, sexual orientation, national origin, genetics, disability, age, or veteran status.



DIRECTOR OF MUSIC MINISTRY

SEEKING AN EXPERIENCED MUSIC DIRECTOR TO LEAD OUR WORSHIP SERVICES.

Full-time position at Ezion Mount Carmel UMC. Must be available Sundays and holidays.



Ezion Mt. Carmel UMC
800 N. Walnut St.
Wilmington, DE 19801

FOR INQUIRIES, PLEASE EMAIL RESUME AND COVER LETTER TO SHERRI TULL HUBBARD -SPRC@EZIONMOUNTCARMEL.ORG

St. Mark's United Methodist Church of Wilmington, Delaware is seeking a part-time organist for its Sunday morning service, other special services, and accompanying the Chancel Choir. The Sunday morning service is held at 10:00 A.M. throughout the year with choir rehearsals on Wednesday evenings during the school year. St. Mark's is a very active church family with approximately 400 members. Interested candidates should submit a **cover letter and resume as soon as possible**. Email submissions are preferred (office@stmarksumcde.org)

**Saint Mark's United Methodist Church
Job Description and Specifications**

Position (Part Time): Organist

Primary Position Objective: To provide organ/piano music for the traditional services, including special events, while working with the staff to promote the vision and mission of the church.

Key Areas of Responsibility/General Duties:

Provide organ/piano music during the service, including choir accompaniment, on Sundays throughout the year

Rehearse with Chancel Choir on Wednesday evenings from Labor Day through mid-June

Rehearse and accompany soloists and small groups that provide special music for the service during the summer months

Provide music for special services (e.g., seasonal programs and additional services during Lent, Holy Week and Christmas)

Work with the Sr. Pastor and Music Director to coordinate music

Attend monthly staff meetings

Qualifications:

Formal training in organ and piano through private study or higher education

Experience in choir accompaniment and working with a conductor in a choral setting

Knowledge of a varied repertoire of sacred literature

Church organ experience preferred

A background check will be required for this position since we are a Safe Sanctuary establishment

Contact Information:

St. Mark's United Methodist Church

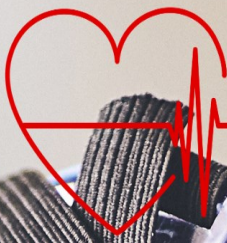
Attn: SPRC Committee

1700 Limestone Road

Wilmington, DE 19804

302-994-0400

Website: stmarksumcde.org



EZION MOUNT CARMEL

Heart Beat of the Community



Part-time Church Maintenance Job Available

**HELP KEEP OUR CHURCH
BEAUTIFUL.**

**Ezion Mt. Carmel UMC
800 N. Walnut St.
Wilmington, DE 19801**

**For inquiries, please email your resume and cover letter to
Sherri Tull Hubbard - sprc@Ezionmountcarmel.org.**

Delaware District Office
900 N. Washington St.
Wilmington, DE 19801

District Superintendent
Rev. Joseph Archie, III
Phone: 302-494-1030

Andrea Lenker
Administrative Assistant
Phone: 302-655-8873
Office Hours:
Monday—Thursday
7:30 am—2:00 pm
DelawareDistrictUMC@gmail.com

Peninsula-Delaware
Conference
139 N. State St.
Dover, DE 19901
www.pen-del.org
Phone: 302-674-2626
877-737-3351

Presiding Bishop
Bishop LaTrelle Easterling
11711 E. Market Pl.
Fulton, MD 20759
410-309-3400

The United States Post Office will be raising the price of a first class stamp to 73¢ on July 14th. Stock up now on your postage stamps before the increase. The last increase was just in January.



The Delaware District Newsletter is published bi-weekly on a Tuesday. Articles or flyers for the next issue are due on **Saturday, June 8th To submit articles, please send them to the District Office.**

When submitting articles or flyers for the newsletter, please send them as a word document or jpg so I can easily insert them into the newsletter.

